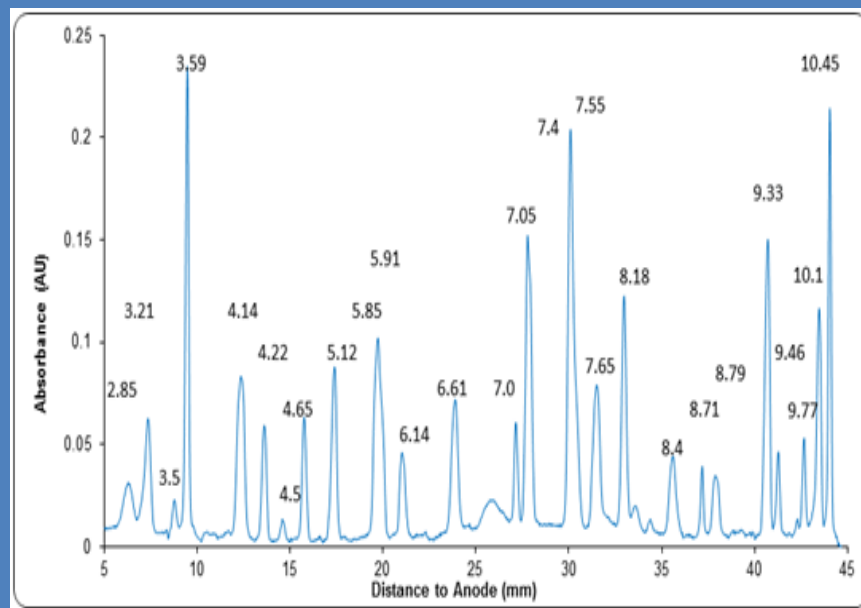


Main Advantages of the CEInfinite pl markers

We offer synthetic small molecule and synthetic peptide pl markers that evenly cover pH range from 2.85 to 10.45. The advantages of our **CEInfinite** pl markers are:

- ✓ More stable during storage
- ✓ Focus to single peak in (i)CIEF
- ✓ No interaction with proteins
- ✓ Very well spaced
- ✓ Synthetic small molecule pl markers resist enzyme digestion



In addition we offer custom-made pl markers to help you with achieving higher resolution of your iCIEF and/or CIEF assays. We understand your requirements. Please don't hesitate to contact us.