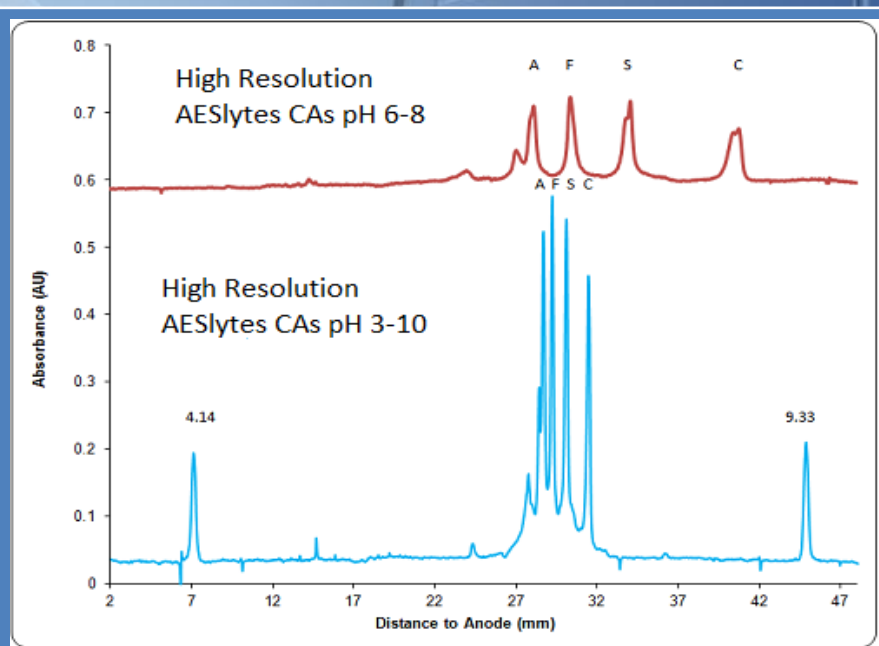


Main Advantages of the CEInfinite AESlytes CAs

The AESlytes CAs were developed specifically for protein high performance iCIEF separation based on our extensive research. In addition to meet all the requirements of good CAs, such as

- ✓ Low UV absorbance
- ✓ Good pH linearity
- ✓ Good stability
- ✓ Good buffer capacity
- ✓ Insignificant interaction with protein in the sample
- ✓ Use at very low concentration for MS detection



In addition we offer custom-made AESlytes CAs to help you with achieving higher resolution of your iCIEF and/or IEF assays. We understand your requirements. Please don't hesitate to contact us.