



NEW

THE RIGHT LIGHT

RUBY GEL STAIN

Fluorescent stain for
protein detection in gels

03



www.cyanagen.com

RUBY GEL STAIN

TECHNICAL DESCRIPTION

Ruby Gel Stain is a ready to use kit for rapid and sensitive protein staining in 1D and 2D SDS polyacrylamide electrophoresis gels.

It enables optimal visualization and quantitation of proteins with high contrast and the same sensitivity as silver staining without its drawbacks. The staining procedure is a simple 220 minutes, three step protocol.

After staining, proteins can be removed from the gel and analyzed by mass spectrometry without interference from the stain.

The dye has optimal excitation at 302 and 470 nm, with an emission maximum at approximately 610 nm.

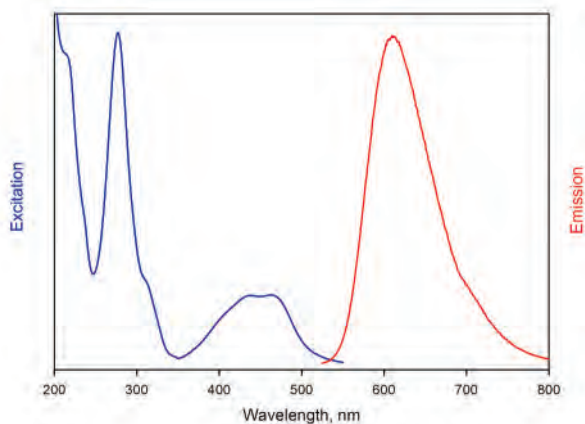
Ruby Gel Stain can be excited with UV-light, UV transilluminator and 405, 445, 473-488 nm laser sources.

FEATURES

Ready to use kit

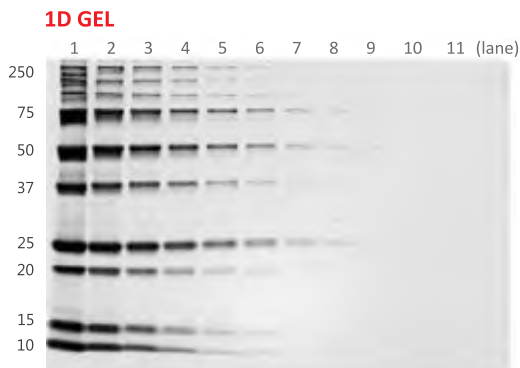
- High purity dye: >98%
- Optimal signal to background ratio
- Strong, uniform and reproducible signal from 0.2 ng to 10 ng protein
- Fast staining protocol (220 min)
- Convenient: fixing and destaining solutions included in the kit

The gel can be visualized using excitation wavelength in the 400-500 nm range with bright emission peak centred around 610 nm.

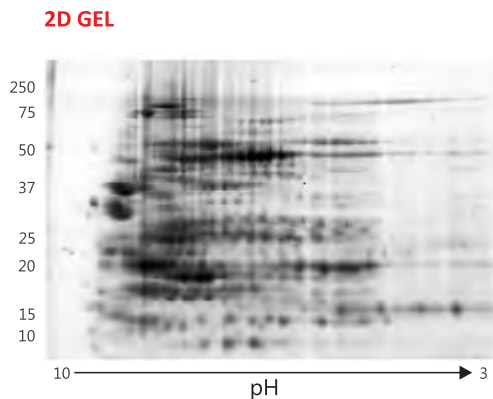


product	cat #	size	Cat #
RUBY GEL STAIN	PRTD066,0050	50 mL A + 100 mL B	
	PRTD066,0250	250 mL A + 500 mL B	
	PRTD066,0500	500 mL A + 1000 mL B	

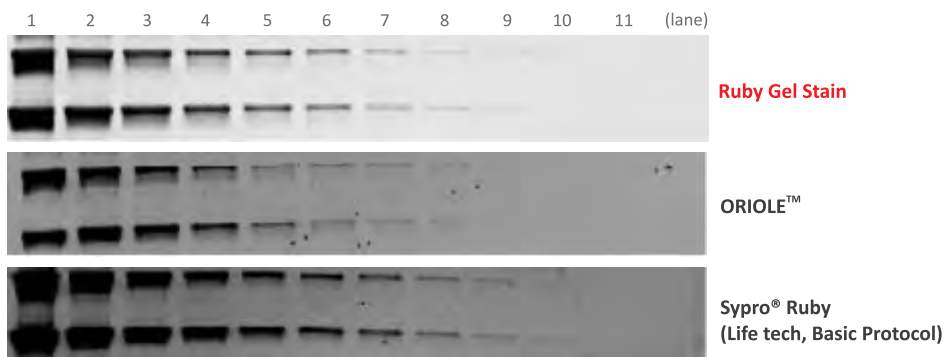
IMAGES AND COMPARISON WITH THE MOST USED GEL STAINING REAGENTS



Two-fold dilution series of the Precision Plus Protein™ Unstained Bio-Rad marker separated on a Bio-Rad Mini-PROTEAN® TGX™ 12% and stained following Ruby Gel Stain 220 min protocol. Images acquired by GEHC "ImageQuant™ LAS 4000", Exc 312 nm, exposure time 1s. Lane 9 is approximately 0.4 ng



60 µg of Bio-Rad E.coli lysate sample ready prep, separated on Bio-Rad non linear 3-10 pH IPG strip and then on a SDS-PAGE (T%8-16) with a Bio-Rad PROTEAN® II XI system. The gel was stained following Ruby Gel Stain 220 min protocol. The image was digitalized by Bio-Rad Molecular Imager FX™ Pro fluorescent imager, PMT Voltage Medium Sample Intensity.

1D GEL – COMPARISON

Ruby Gel Stain on a 1D gel. Two-fold dilution series of Precision Plus Protein™ Unstained Bio-Rad marker, separated on a Bio-Rad Mini PROTEAN® TGX™ 12%. Lane 9 is approximately 0.4 ng.

Images acquired by GEHC ImageQUANT™ LAS 4000, Ex 312 nm, exposure time 1s.

CYANAGEN

Reagents for Molecular Biology

RUBY GEL STAIN

Cyanagen srl has a certified Quality System

ISO 9001:2008 QUALITY CERTIFIED

ISO 9001
BUREAU VERITAS
Certification



03

www.cyanagen.com

Your local distributor:



THE INNOVATOR FOR SCIENCE

WWW.ISOGEN-LIFESCIENCE.COM

Netherlands

Isogen Life Science B.V.
Veldzigt 2a
3454 PW De Meern
The Netherlands
tel. +31 30 688 0771
fax +31 30 688 8009
info@isogen-lifescience.com

Belgium and Luxembourg

Isogen Life Science B.V.
Free tel. 0800-54048
Veldzigt 2a
3454 PW De Meern
The Netherlands
fax +31 30 688 8009
info@isogen-lifescience.com

Spain and Portugal

Isogen Life Science S.L.
Paseo del Ferrocarril, 339 - 3º
Parque Empresarial del Mediterraneo
08860 Castelldefels - Barcelona
Tel.: +34 936 644 894
clientes@isogen-lifescience.com